

University of Winnipeg

Andrew de Vries

VP, Conservation and Indigenous Relations

October 5, 2016



SFI-00001

LINKING FUTURE FORESTS TO COMMUNITIES

A collage of nature images on the left side of the slide. At the top, a sunlit forest with tall trees and rays of light. Below that, a wolf standing in a forest. At the bottom, a stream flowing through a forest with rocks.

AGENDA

About SFI

Indigenous Communities

SFI Conservation and Community
Partnership Grants Program

Conservation Impact

Annual Conference 2017



A sustainability organization that operates at the intersection of communities, sustainable supply chains, and the future forest.



SFI IS A SUSTAINABILITY ORGANIZATION DEDICATED TO THE FUTURE OF OUR FORESTS



ENSURE CONNECTIONS AND RELEVANCY

SFI BOARD

ECONOMIC



ENVIRONMENTAL



SOCIAL



SFI STANDARDS

A PROOF POINT FOR ENVIRONMENTAL STEWARDSHIP AND SUSTAINABLE FORESTRY

SFI Standards are based on principles that promote continual improvement in sustainable forest management practices.

The **SFI 2015-2019 Forest Management Standard** is used by owners or managers of forest land to promote sustainable forest management.

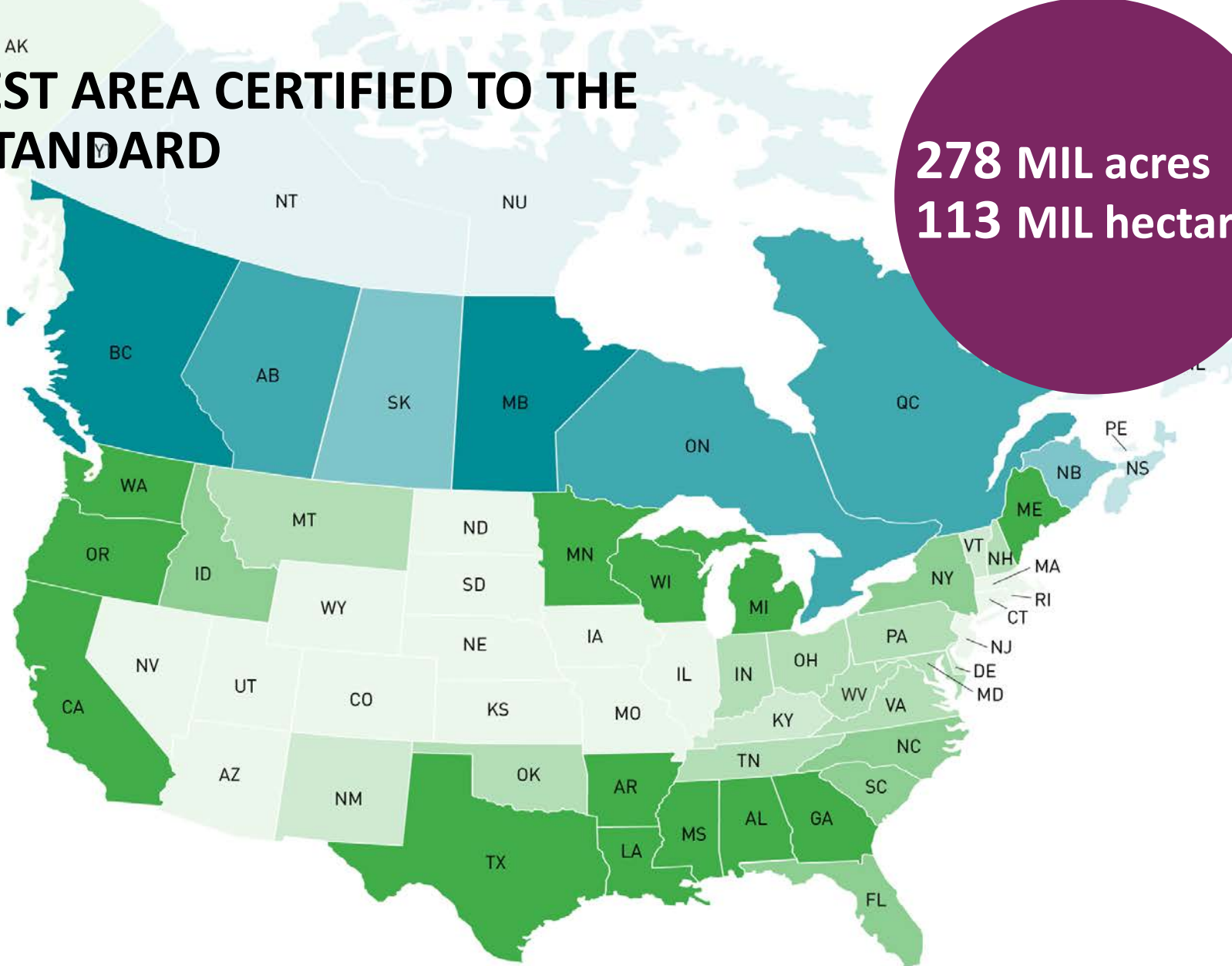
The **SFI 2015-2019 Fiber Sourcing Standard** sets mandatory requirements for all primary mills and manufacturers for the responsible procurement of fiber from the forest, whether the forest is certified or not.

The **SFI 2015-2019 Chain of Custody Standard** tracks certified forest fiber, uncertified forest fiber that is non-controversial and recycled fiber through the different stages of production.



FOREST AREA CERTIFIED TO THE SFI STANDARD

278 MIL acres
113 MIL hectares



20 million + hectares	10 - 20 million hectares	2 - 10 million hectares	> 1 million hectares	0 acres
2 million + acres	1 - 2 million acres	100,000 - 1 million acres	> 100,000 acres	0 acres

DIVERSITY OF SFI PROGRAM PARTICIPANTS

Provincial/State
Public Lands



Private Lands



University Lands



Indigenous Lands



Non Profit
Organization Lands

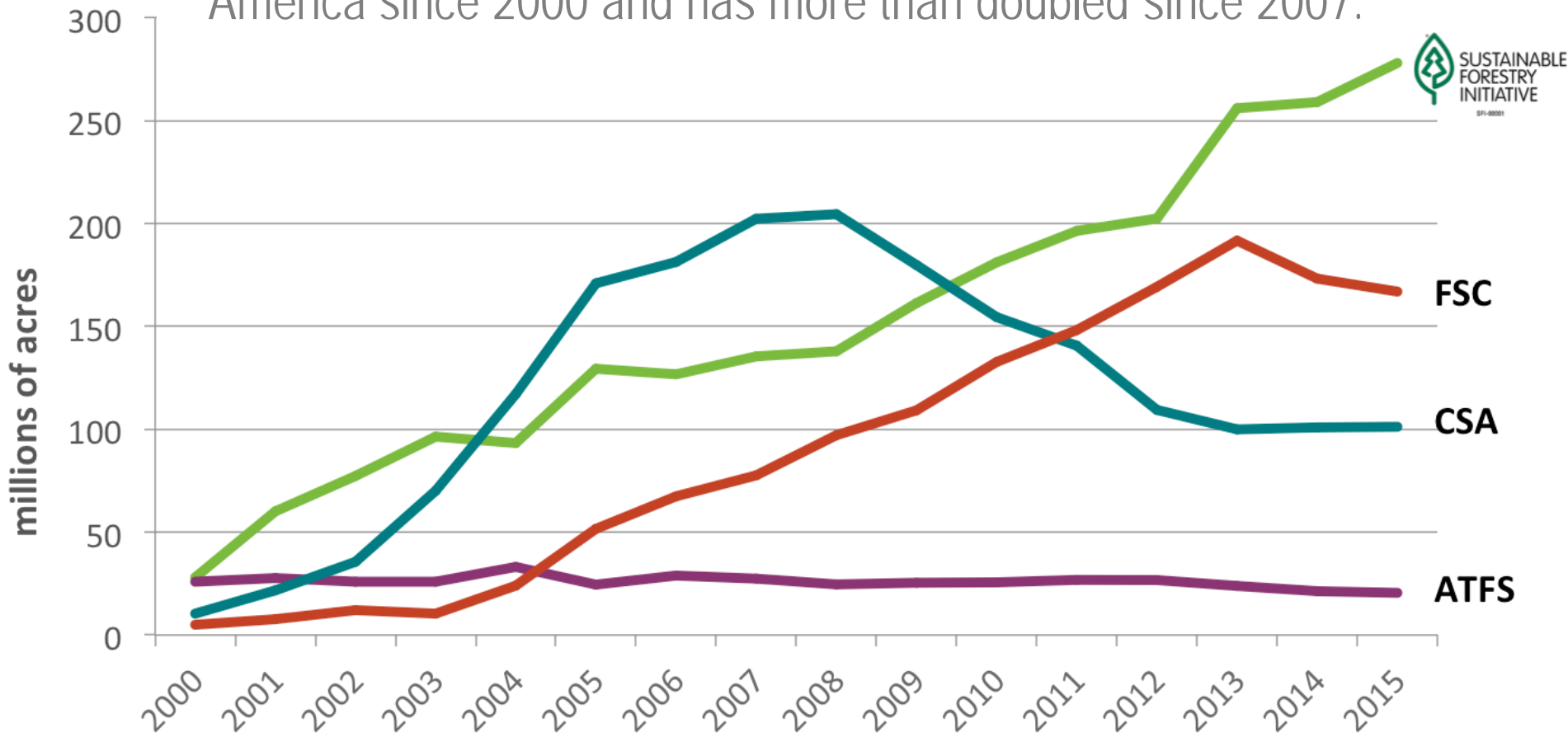


Conservation Lands



SFI FOREST MANAGEMENT STANDARD GROWTH IN NORTH AMERICA LEADS ALL OTHERS

The SFI Standard has **consistently gained more certified forest area** than any other forest management standard in North America since 2000 and has more than doubled since 2007.



DEMAND FOR SFI LABELS IS GROWING

SFI LABEL USE APPROVALS HAVE INCREASED

FROM **50** LABEL
APPROVALS IN 2007



6,000 LABEL
APPROVALS IN 2013

6,500 LABEL
APPROVALS IN 2014

7,000 LABEL
APPROVALS IN 2015

7,000
SFI Label
Approvals





PEOPLE ARE USING SFI LABELS MORE THAN EVER

There's a **simple way you can ensure that our forests remain healthy.**

Look for the SFI label on any wood, paper and packaging product you purchase.

It's your assurance that what you buy comes from responsibly managed forests.



35% OF

20,000

U.S. CONSUMERS SURVEYED

RECOGNIZE
the SFI logo – more than any
other forest certification standard.

A GLOBAL REACH

Products that are certified to SFI Standards are sold in

MORE THAN

120

COUNTRIES



SFI's international recognition is increased by the endorsement of the Programme for the Endorsement of Forest Certification (PEFC). In North America, PEFC has also endorsed ATFS and CSA standards. In turn SFI recognizes both ATFS and CSA certified content in its supply chain.



SFI CONNECTS TO INDIGENOUS COMMUNITIES

Indigenous groups across North America pride themselves on supporting their communities with responsible forest management that is based on their cultural values and traditional practices.

The **SFI Forest Management Standard** is aligned with **traditional values** and has specific **provisions for respecting Indigenous rights**.



INDIGENOUS INTERESTS

31

INDIGENOUS
COMMUNITIES

ACROSS NORTH AMERICA USE
THE SFI STANDARD TO MANAGE

5.1 MILLION
ACRES OF FORESTLANDS

2.0 MILLION
HECTARES OF FORESTLANDS



UNIVERSITÉ
LAVAL

First Nations and Quebec Forest Sector Collaborate for the Future of Aboriginal Forestry

Helping aboriginal communities and forest companies cooperate to expand opportunities for aboriginal forestry workers.

Project Partners: SFI Program Participants, Resolute Forest Products, all members of the Quebec Forest Industry Council, including other SFI Program participants, and Mashteuiatsh Nation, Pessamit Nation.

2016 SFI
Conservation
Grant



SUSTAINABLE
FORESTRY
INITIATIVE

SFI-0001





Take Care of Our Land San Carlos Natural Resource Youth Practicum

San Carlos Apache Forest Resources Youth Outreach Program is being supported by SFI to promote the link between sustainable forestry, cultural heritage and empowering Tribal youth.

Project Partners: Bureau of Indian Affairs, the U.S. Department of Agriculture Natural Resources Conservation Service and San Carlos High School.



SUSTAINABLE
FORESTRY
INITIATIVE

SFI-0001

2016 SFI
Community
Grant

“ In Canada there are some 603 Indian Bands and housing problems exist in nearly every community. Inuit and Metis communities also face significant housing problems. It’s why **SFI has partnered with Habitat for Humanity Canada’s Indigenous Housing Program** to bring greater awareness of the problem and to encourage the use of certified wood. We are making progress.”

DAVID WALKEM

Chief of Cook’s Ferry Indian Band
SFI Board member





**Community
Cornerstone
Quilakwa
Center Wins
SFI Award**

Using wood in innovative and beautiful ways to bring new life to a BC community hub in Enderby, British Columbia, has earned **KH Designs** the **third SFI Award** part of the **2015 North American Wood Design Awards Program**.

SFI CONSERVATION & COMMUNITY PARTNERSHIPS GRANT PROGRAM



Since 2010, SFI has awarded 85 Conservation and Community Partnerships Grants totaling almost \$3 million, to foster conservation and community projects. When leveraged with project partner contributions, the total investment **exceeds \$9.5 million.**

2016 SFI CONSERVATION GRANT RECIPIENTS

Focus on the connection between sustainable supply chains and the natural resource values we all care about, like water quality, biodiversity, wildlife habitat, species at risk, and forests with exceptional conservation value.



UNIVERSITÉ
LAVAL



fRI Research
Informing Land & Resource Management



Keeping
Maine's
Forests





**SFI
CONSERVATION
IMPACT**

KEY TOPICS IDENTIFIED



WATER



CLIMATE CHANGE



BIODIVERSITY

Investigating Carbon Sequestration in Boreal Upland Forests and Wetlands

Showing how forested wetlands certified to SFI are helping to sequester carbon and mitigate climate change.

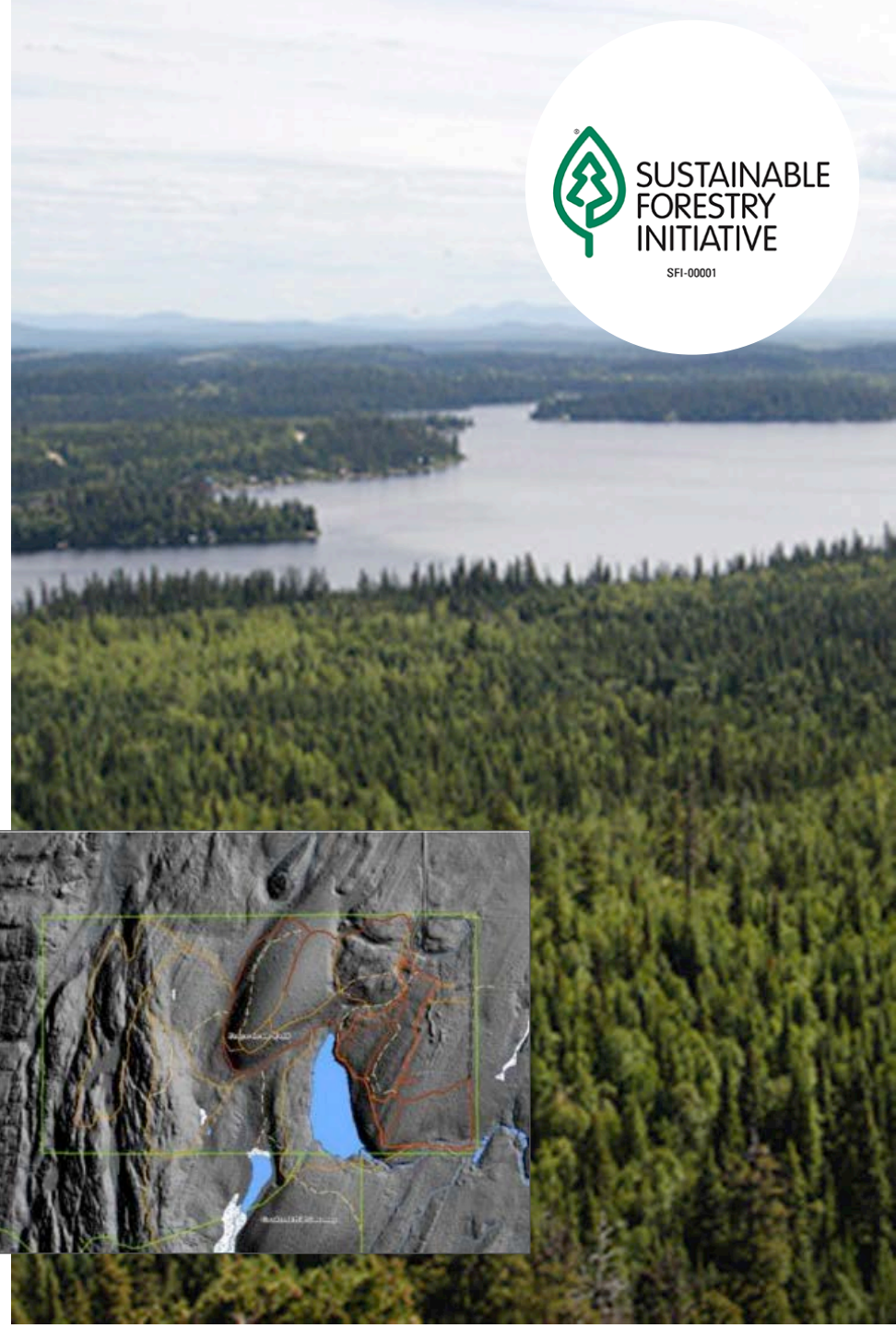
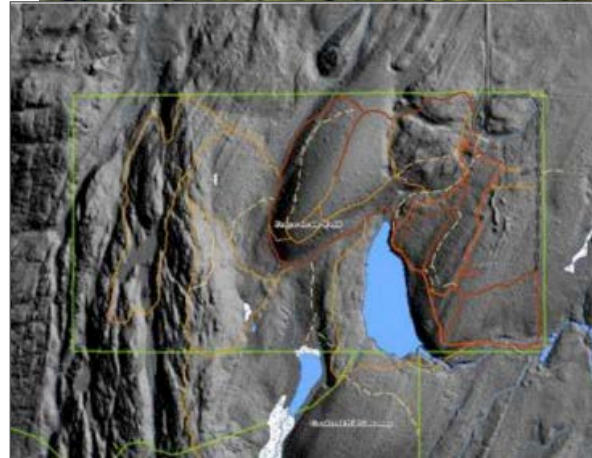
Project Partners: Ducks Unlimited Canada and SFI Program Participants Louisiana-Pacific Canada Ltd. and Spruce Products Ltd.



UNBC: Remote-Sensing LiDAR to Measure Biodiversity on Lands Certified to SFI Program

Using remote-sensing laser technology to measure and rapidly evaluate biodiversity in forests certified to SFI.

Project Partners: SFI Program Participant Dunkley Lumber, Aleza Lake Research Forest Society, UNBC Geography, and Ministry of Forests: Lands and Natural Resources Operations Government of British Columbia.



2016 SFI COMMUNITY GRANT RECIPIENTS



Bringing communities and youth together to shape a sustainable future.



School Assembly Program Development

Deliver Earth Ranger's School Assembly Program to over 200,000 students across Canada, bringing forest conservation to life with dynamic live animals and high quality content.

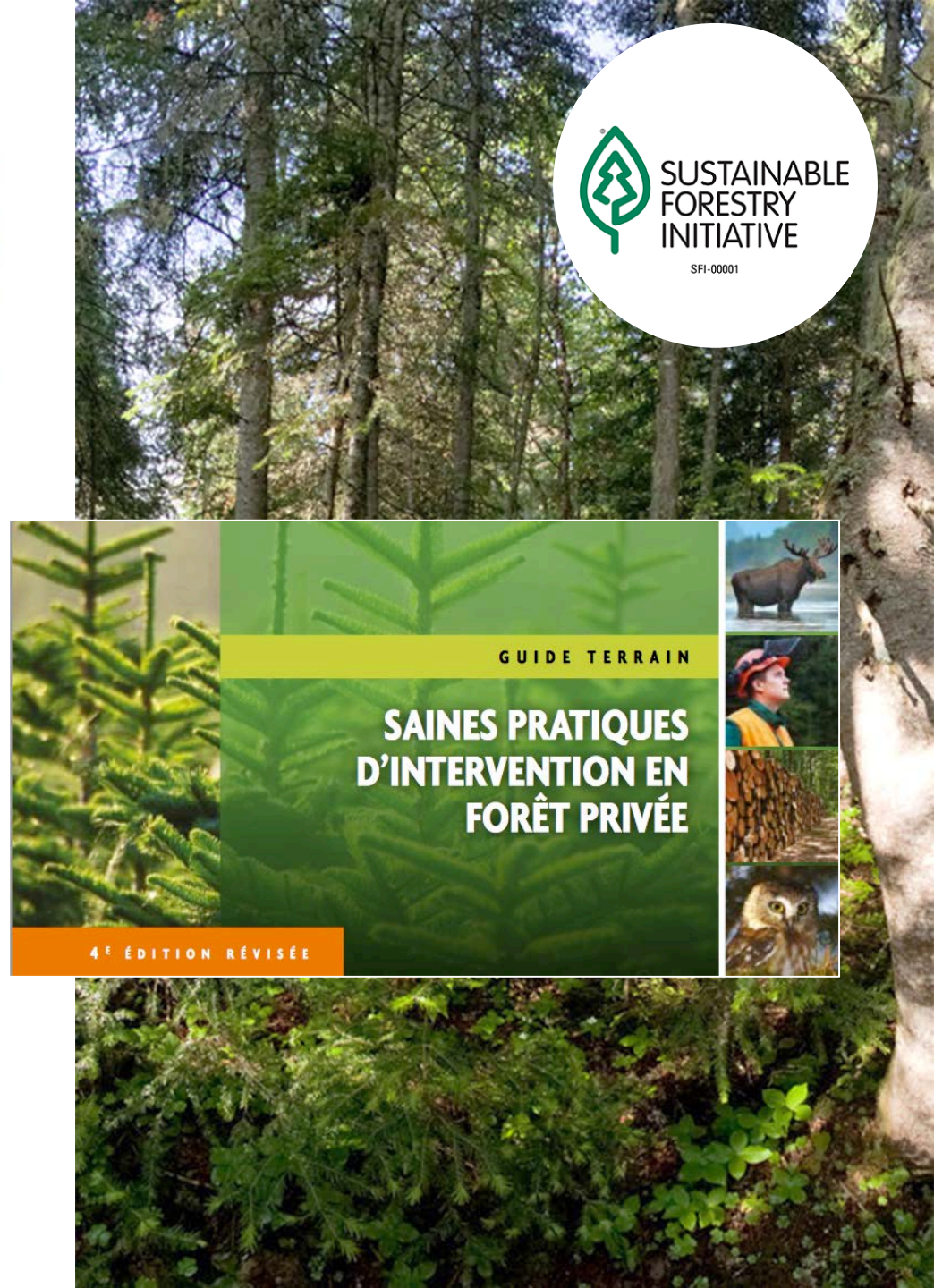




Update of the “Sound Forestry Practices for Private Woodlots” Field Guide

Update forestry practices for a private woodlots field guide that could reach more than 130,000 woodlot owners.

Project Partners: 13 forest-related marketing boards in Quebec, the Quebec SFI Implementation Committee, Canadian forest service and the Fondation de la Faune du Québec (FFQ)



SAVE THE DATE



SFI Annual Conference Ottawa, Canada

Be here for Canada's 150th Celebration!

SEPTEMBER 27 – 29, 2017



SUSTAINABLE
FORESTRY
INITIATIVE

sficonference.org

SFI-00001

22 STUDENTS (9 SCHOOLS) ATTENDING SFI CONFERENCE IN 2016



Tyler Coffman



John Burrows



Timothy Hipp



Hermudananto



Tyler Reeves



Matthew Sault



Chantal Tumpach



Emily Caretti



Lindsay Forintos



Hunter Stanke



Mia White



Alex Helman



Sara Kelso



Preston Bush



Ashley Jeckel



Brandon Outen



Daniela Agostini



John Johnson



Luke Huffines



Sylvia Weir



Jennifer Baici



Sarah Todgham



4 STUDENTS (3 SCHOOLS) ATTENDED SFI CONFERENCE IN 2011

CONTINUING EDUCATION CREDITS

This program was reviewed and approved for professional continuing education credits



Stop by the registration desk for any forms and assistance.



SFI Conservation and Community Partnerships Grant Program

REQUEST FOR PROPOSALS NOW OPEN

SFI Opens RFP Inviting New
Partnerships for
Conservation and
Community Impact
Throughout North America

MONDAY, OCTOBER 10, 2016

RFP DEADLINE

www.sfiprogram.org/grants



SUSTAINABLE
FORESTRY
INITIATIVE

SFI-00001



JOIN US ON SOCIAL MEDIA

Join us on various social media networks and tag us in stories.

**LET'S GET
SOCIAL**



Follow us: Sustainable Forestry Initiative



Like us: Sustainable Forestry Initiative



Follow us: @SFIprogram