

CONNECTING TO THE UNIVERSITY OF WINNIPEG

WPA-ENCRYPTED WIRELESS NETWORK

For Students

GENERAL CONFIGURATION INFORMATION

Most wireless network adapters made since the middle of 2003 should be WPA compatible. You should ensure that you have the latest drivers installed for your adapter. The information that you will need for any configuration is as follows (depending on your adapter/operating system, you may not need all of it):

SSID (Network Name): UW-STUDENTS

WPA-Passphrase (Network key): 22964kjinwer94773cgenu829321

Network Authentication: WPA-PSK, WPA2, or WPA2-Personal

Requires web authentication. This means that even though the client has associated with the network and obtained an IP address, no network activity can occur until a web browser is opened. The browser will automatically be redirected to an authentication page, where the user enters their myUwinnipeg username and password. You can obtain your myUwinnipeg account information at <https://claimid.uwinnipeg.ca>. After that has happened, the user is free to use the network.

Some adapters can be easily configured using only the utilities of your operating system, but some adapters will require the use of proprietary utilities. See your adapter documentation for details.

SIMPLE SETUP

- Your wireless card should detect any available wireless connections when the computer starts up.
- If this is the case, a message balloon stating “Wireless networks detected” should appear on your screen. Click this balloon, and a “Choose a wireless network” window should appear.
- This window displays names of whatever available wireless networks are available in the area. Click on the one labeled “UW-STUDENTS”, then click “Connect”.
- You will be prompted to enter the network key. Type in the key noted above, hit the tab key, and then enter the key again.
- Now Click Connect, and the network connection should be established. You can now close the Wireless network window and go about your business. The network key will be saved so that you need not enter it again.

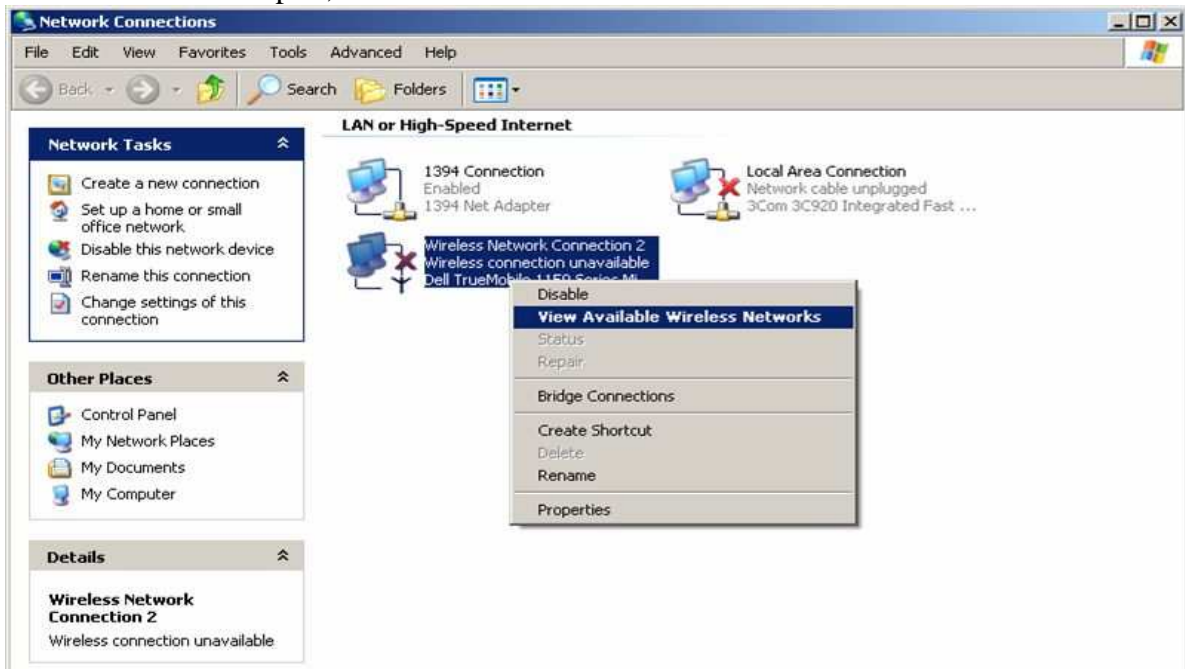
If your wireless adapter fails to detect or is not capable of detecting available networks, try using the configuration example as a guide to manually configure the network

CONFIGURATION EXAMPLE

Operating system: Windows XP (slightly different for SP2)

Wireless adapter: Truemobile 1150 built-in

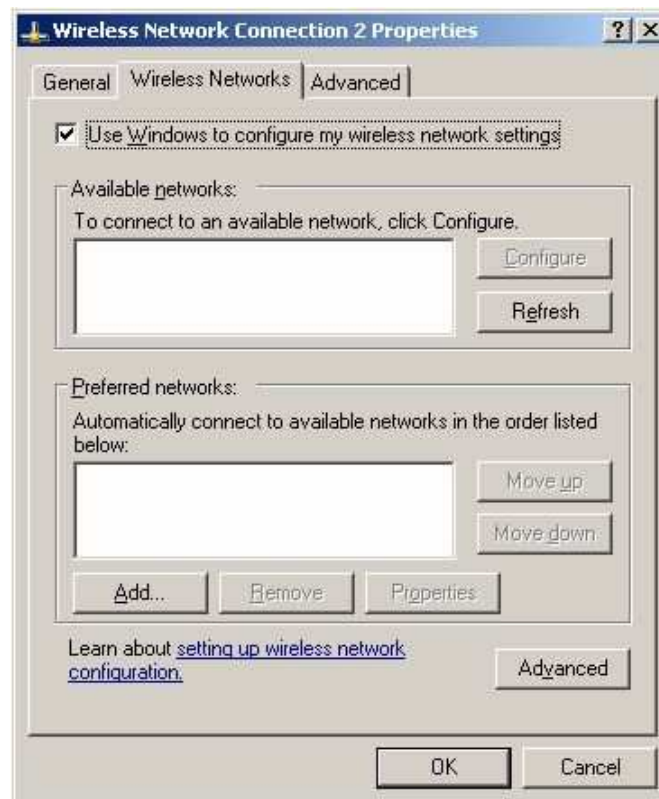
-Open the properties of your network card by clicking “Start” in the bottom left hand corner. Select “Connect to”, then click on “Show All Connections”. Right-click on your wireless network adapter, then click “View Available Wireless Networks”.



-In the window that appears, click “Advanced” or “Change Advanced Settings”, depending on which window you see.



-In the window that appears, click the “Wireless Networks” tab, then click “Add”.



Fill out the window as shown, using the WPA-passphrase at the top of the document for the “network key”. If you can’t see the WPA options in “Network Authentication” and “Data Encryption”, you may not have the latest drivers available for your adapter, your adapter may not be WPA compatible, or you may need to follow the manufacturer’s instructions.



After clicking “OK” until all the windows are gone, you should see a bubble like the one shown below, indicating that you have successfully connected to the wireless network. Wait a moment for your computer to obtain an IP address, and then you should be able to access the internet. You will not have to re-configure your machine the next time you want to connect to the wireless network. Simply turn your machine on while in range of a wireless access point, and it will connect automatically.

If you aren’t able to connect, make sure that you are in range of a wireless access point and double-check your configuration, specifically the WPA passphrase. It is case-sensitive.

