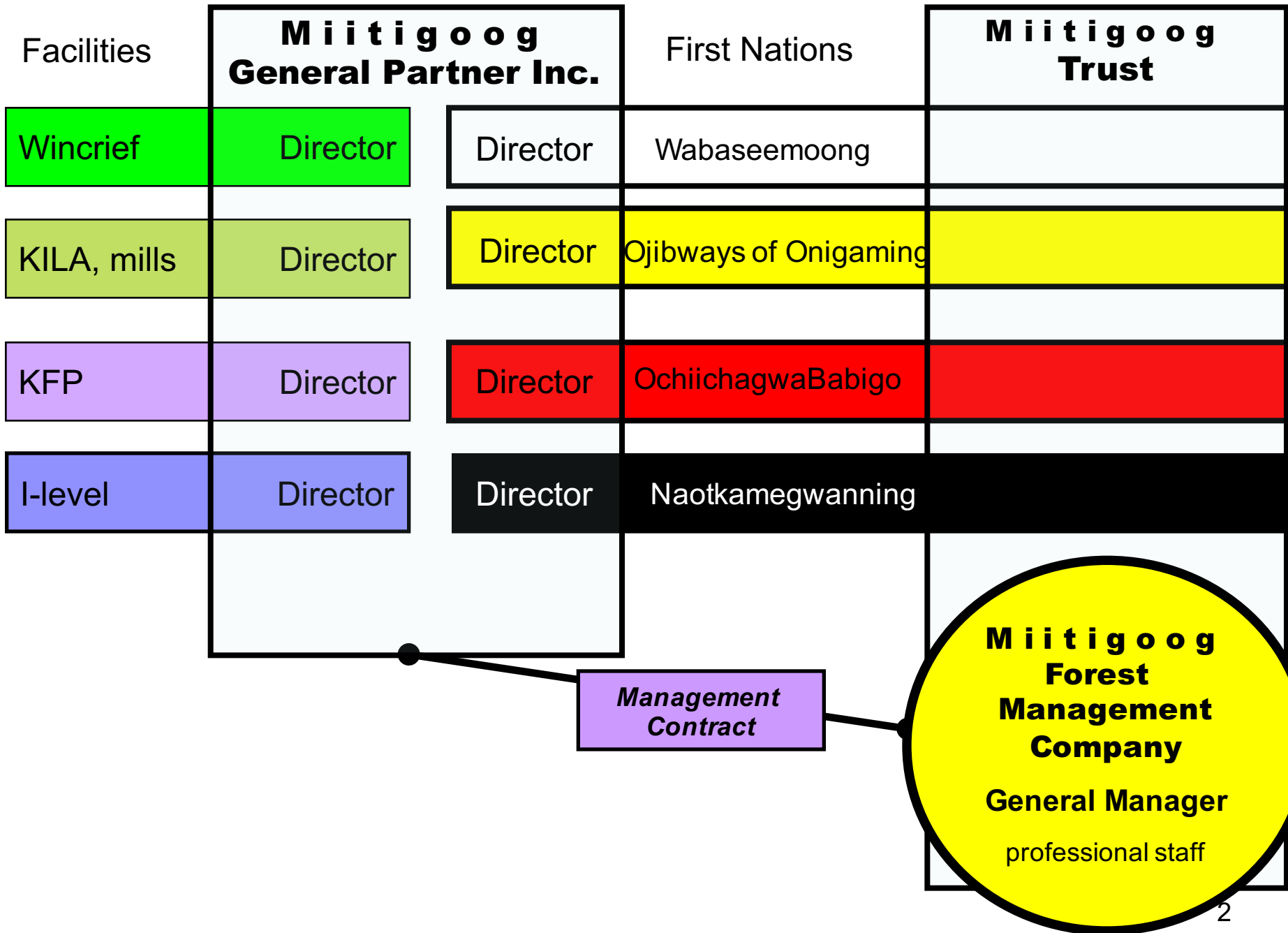


Introducing:

M i i t i g o o g L P

a new partnership for

forest *management*



MIITIGOOG LIMITED PARTNERSHIP (SFL)

(Limited Partnership Agreement)

GENERAL PARTNER

MIITIGOOG GENERAL PARTNER INC.

(Shareholder's Agreement)

Board of Directors (8)

INDUSTRY (4)

- Weyerhaeuser Company Ltd.
- Kenora Forest Products
- Wincrief Forest Products Ltd.
- Small Sawmills & KILA

FN Trust (4)

- Wabaseemoong I.N.
- Ochiichagwe'Babigo'Ining F.N.
- Nautkamegwanning F.N.
- Ojibways of Onigaming F.N.

LIMITED PARTNERS

FIRST NATIONS TRUST

Wabaseemoong I.N.

Ochiichagwe'Babigo'Ining F.N.

Nautkamegwanning F.N.

Ojibways of Onigaming F.N.

Management Contract

Miitigoog Forest Management
Company (Missun Integrated
Resource Management
Company)

General Manager

Miitigoog Limited Partnership

1. Covered by an overall partnership agreement between the general partner and the limited partners
2. SFL held by Miitigoog Limited Partnership (signed by the General Partner as the working portion of the partnership)

Limited Partners

1. Exclusively First Nation limited partners
2. Initial participation with First Nations active in discussions:
 1. Wabaseemoong FN
 2. Naotkamegwanning FN
 3. Ochiichagwe'Babigo'ining FN
 4. Ojibways of Onigaming FN

First Nations Trust

1. On-ramp for new FN entrants
2. No involvement with ‘day to day’ activities of operating company and SFL.
3. Own and operate the Miitigoog Forest Management Company (operating name of Miisun Integrated Resource Management Inc.)